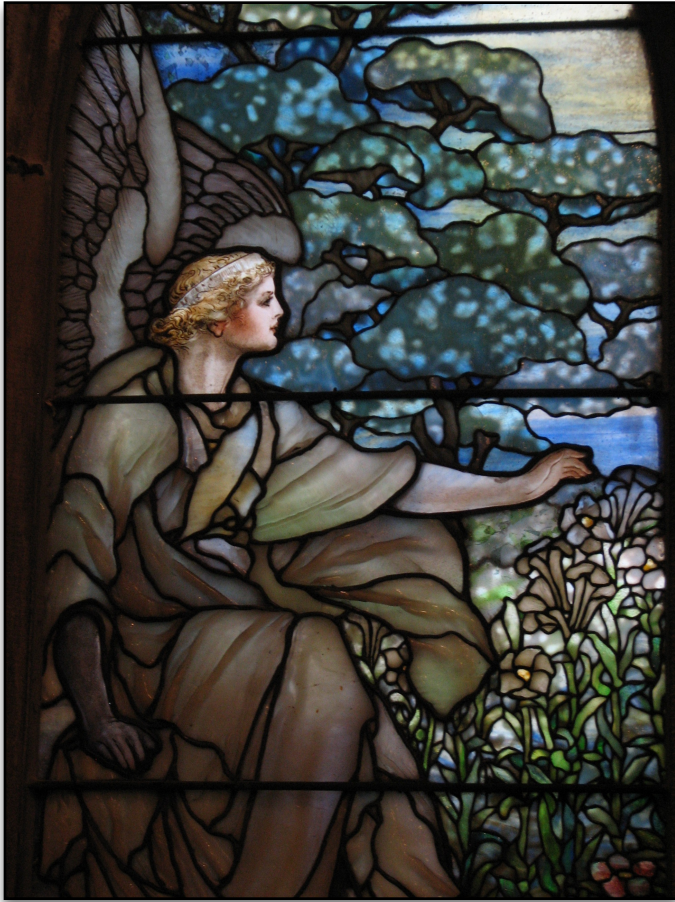


THE COLUMBARIUM

FIRST PRESBYTERIAN CHURCH IN PHILADELPHIA



THE COLUMBARIUM

The First Presbyterian Church in Philadelphia offers a sacred place for the disposition of the cremated remains of loved ones. The Columbarium is intended as a resting place for these cremated remains and will be preserved as a place of loving memories and quiet reflection.

The Columbarium enclosure is located behind the wrought-iron gates off the hallway connecting the sanctuary to Old Buttonwood Hall.

The Columbarium enclosure is suitable for small committal services for all persons whose remains are inurned in the Columbarium.

The Columbarium contains 135 niches. Each niche will accommodate two urns. The urns for the niches will be furnished by the Church. The face of each niche shall be inscribed by the Church with the name(s) and the birth and death dates of the persons whose remains are inurned in the niche.

HOW TO RESERVE A NICHE

Inurnment of cremated remains in the Columbarium is limited to members, former members and current and former staff members of the Church, as well as members of their immediate families. The placement in the Columbarium of cremated remains of persons not eligible under this section may be approved only if recommended by the Columbarium Committee and approved by the Session.

Persons desiring to reserve a niche or niches in the Columbarium should contact the pastor of the Church. A formal application form must be completed and submitted to the Columbarium Committee. The standard reservation fee for a Columbarium niche is \$1,750, \$100 of which is to be paid as a non-refundable deposit submitted with the application. Upon approval of the application, an Inurnment Agreement must be completed and accompanied by the full payment of \$1750 (less the \$100 deposit) within 90 days.



*Precious in the sight of the Lord is
the death of his faithful ones.*

--Psalm 116:15

THE COLUMBARIUM OF THE FIRST
PRESBYTERIAN CHURCH IN PHILADELPHIA

COLUMBARIUM COMMITTEE

JOANN BAILEY, SHEILA FERGUSON, WILLIAM LEONARD, PAT QUIGG,
PATTI SASSOLI, PHIL STEINBERG, AND HERB VALENTINE



The FIRST
PRESBYTERIAN
CHURCH
in PHILADELPHIA

est. 1698

201 SOUTH 21ST STREET
PHILADELPHIA, PA 19103
215-567-0532
WWW.FPCPHILA.ORG